

# Chatillon

## LG Series Mechanical Force Gauge

Specification Sheet

SS-LG-0210

February 2010

The CHATILLON® LG Series mechanical force gauge is ideal for a wide range of force testing applications. Based on our popular DPP Series force gauge, the LG Series features a larger, 2.25-inch dial for improved resolution and readability, peak hold button, ergonomic shape and improved accuracy of  $\pm 0.5\%$  of full scale. The LG gauge is an excellent, economical solution for tensile or compression testing.

The durable, plastic housing fits naturally in the hand for a comfortable and firm grip even at maximum loads. Gauges may be mounted to a test stand for even greater control and consistent results in repetitive testing applications. Easy to read concentric dial measures clockwise only. Dial rotates 360-degrees for taring. A peak hold button captures peak readings and can be easily and quickly returned to zero. A mechanical overload feature protects the gauge from damage. Available in lbf, kgf or N units of measure. LG Series gauges come complete with protective carrying case and a set of stainless steel attachments. A Certificate of Calibration with Data is supplied standard.

### Features

- Three Graduation Styles
  - LBF
  - KGF
  - Newtons
- Tensile (Pull) and Compression (Push) Testing
- Peak Load Switch
- Tare Ring
- Intrinsically Safe
- NIST Calibration with Data
- 2 Year Warranty

### Specifications

<b>Accuracy:</b>	$\pm 0.5\%$ of Full Scale
<b>Overload Capacity:</b>	110% of Rated Capacity
<b>Maximum Overload:</b>	150% of Rated Capacity
<b>Tare Capacity:</b>	10% of Rated Capacity
<b>Dial Resolution:</b>	0.5% of Full Scale
<b>Deflection (Full Scale):</b>	10mm (.394 inches)
<b>Operating Temperature:</b>	40°F to 110°F 5°C to 45°C
<b>Instrument Weight:</b>	1.5 lbs (0.68 kg)
<b>Shipping Weight:</b>	8.4 lbs (3.80 kg)



*Quality Assured.*

**AMETEK®** | **Chatillon®**  
Force Measurement

Visit us on the worldwide web:  
[www.chatillon.com](http://www.chatillon.com)

## Ordering

### Dial Style - LBF

Model	Capacity
<b>LG-002</b>	2 x 0.01 lbf
<b>LG-005</b>	5 x 0.025 lbf
<b>LG-080</b>	80 x 4 ozf
<b>LG-010</b>	10 x 0.05 lbf
<b>LG-020</b>	20 x 0.1 lbf
<b>LG-030</b>	30 x 0.15 lbf
<b>LG-050</b>	50 x 0.25 lbf
<b>LG-075</b>	75 x 0.375 lbf
<b>LG-100</b>	100 x 0.5 lbf

### Dial Style - KGF

Model	Capacity
<b>LG-1KG</b>	1 x 0.005 kgf
<b>LG-2KG</b>	2 x 0.01 kgf
<b>LG-3KG</b>	3 x 0.015 kgf
<b>LG-5KG</b>	5 x 0.025 kgf
<b>LG-10KG</b>	10 x 0.05 kgf
<b>LG-20KG</b>	20 x 0.1 kgf
<b>LG-30KG</b>	30 x 0.15 kgf
<b>LG-50KG</b>	50 x 0.25 kgf

### Dial Style - N

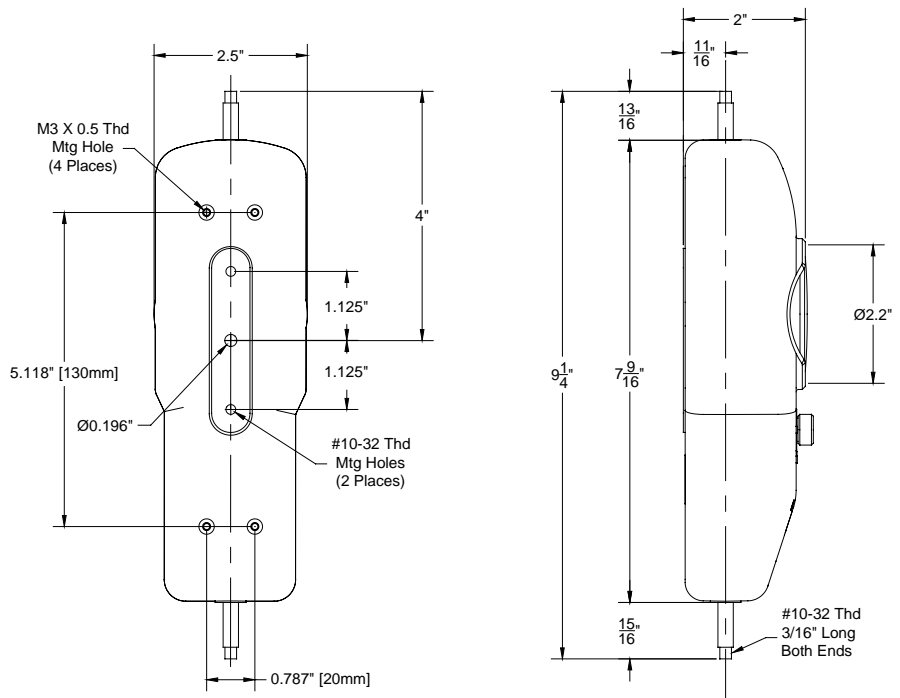
Model	Capacity
<b>LG-10N</b>	10 x 0.05 N
<b>LG-20N</b>	20 x 0.1 N
<b>LG-30N</b>	30 x 0.15 N
<b>LG-50N</b>	50 x 0.25 N
<b>LG-100N</b>	100 x 0.5 N
<b>LG-200N</b>	200 x 1 N
<b>LG-300N</b>	300 x 1.5 N
<b>LG-500N</b>	500 x 2.5 N

### Standard Accessories

Part No.	Description
<b>SPK-FMG-012A</b>	Hook, Low Capacity
<b>SPK-FMG-012B</b>	Hook, Medium Capacity
<b>SPK-FMG-008A</b>	Chisel Point Adapter
<b>SPK-FMG-009A</b>	Point Adapter
<b>SPK-FMG-010A</b>	Notch Adapter
<b>SPK-FMG-011A</b>	Flat Adapter
<b>SPK-FMG-013A</b>	Extension Rod
<b>NC002710</b>	Carrying Case

### Optional Accessories

Part No.	Description
<b>SPK-FMG-HANDLE</b>	Handle Assembly



E96-328  
LG GAUGE SERIES

# AMETEK

## MEASUREMENT & CALIBRATION TECHNOLOGIES

For the authorized Chatillon Distributor or Manufacturer's Representative near you, go to [www.chatillon.com](http://www.chatillon.com)

Americas  
AMETEK  
Measurement & Calibration  
Technologies  
8600 Somerset Drive  
Largo, Florida 33773  
United States of America  
Tel +1-727-536-7831  
Tel +1-800-527-9999  
Fax +1-727-539-6882  
Email [chatillon.fl-lar@ametek.com](mailto:chatillon.fl-lar@ametek.com)

United Kingdom  
Lloyd Instruments Ltd.  
Steyning Way  
Bognor Regis  
West Sussex  
PO22 9ST  
United Kingdom  
Tel +44 (0) 1243 833 370  
Fax +44 (0) 1243 833 401  
Email [uk-far.general@ametek.co.uk](mailto:uk-far.general@ametek.co.uk)

France  
AMETEK S.A.S.  
Rond Point de l'Epine des Champs  
Buro Plus - Bat. D  
78990 Elancourt  
France  
Tel +33 (0)1 30 68 89 40  
Fax +33 (0)1 30 68 89 49  
Email [general@lloyd-instruments.com](mailto:general@lloyd-instruments.com)

Germany  
AMETEK GmbH  
Rudolf-Diesel-Strasse 16  
D-40670 Meerbusch  
Germany  
Tel +49 (0)2159 9136-70  
Fax +49 (0)2159 9136-39  
Email [info@ametek.de](mailto:info@ametek.de)

Singapore  
AMETEK Singapore Pvt. Ltd.  
10 Ang Mo Kio Street 65  
#05-12 Techpoint  
Singapore 569059  
Tel +65-6484-2388  
Fax +65-6481-6588  
Email [aspl@ametek.com.sg](mailto:aspl@ametek.com.sg)

Visit Us on the Worldwide Web at:  
[www.chatillon.com](http://www.chatillon.com)

© 2010 by AMETEK, Inc.

Information within this document is subject to change without notice.

ISO 9001/2000  
ISO/IEC17025  
Manufacturer